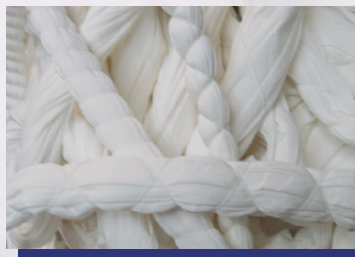


Preparation machine for tie dye effects (batik dyeing effects) · TPD –SR –W · Patented machine



TDP-SR
(single rope execution)
and
TDP-DR
(double rope execution)

- We produce the TDP – SR and also the DR machines in W and WUW version – W stands for only winding machine and WUW stands for winding and unwinding on the same machine.
- With our machine fabric in rope form will be tight together by 1-4 yarn ends.
We can do S- or Z-windings but also S and Z at same time (cross and criss-cross windings).
Number on windings per meter, tension of the yarn ends, distance between the windings and also the winding angle can be adjusted due to frequency converters for each single drive.
- We do single rope machines and also and double rope machines for higher production.
- We have machines for the winding process, we have machines for the unwinding process and we also do combination machines that can do the winding and unwinding process.



Different windings – the dyeing effects are influenced by the tension used to wind the fabric, the distance between the windings and the number of yarn ends used to tie the rope

office:
Ostdamm 151
D-48249 Dülmen
Germany
warehouse:
Siemensring 13
D-41063 Mönchengladbach

Tel. +49 (0) 25 94/890 640
Fax +49 (0) 25 94/890 642
mob./cell +49 (0) 171/63 26 416
E-Mail: albert.classen@t-online.de
od./or: SD@CLASSEN-TM.COM
Homepage: CLASSEN-TM.COM
and for crushing mcs: www.crushing-machine.de

Sparkasse Coesfeld:
BLZ 401 545 30 · Konto 18 017 483
Deutsche Bank AG:
BLZ 314 700 04 · Konto 8 170 854

UST-Id.Nr. (VAT No.) DE 812132986
swift code: DEUT DE DD 314

- The winding process on our machines is very effective and the speed is 8-10 m/min so on a double rope system up to 1200 m/h can be prepared. The process can be programmed, so that for woven or knitted articles, lighter or more heavy articles , the important parameters can be set accordingly . We get very regular and reproducible effects.

With our machine the dyer can use his standard dyeing machine, only dyeing process, dyes and auxiliaries have to be chosen.

- **Technical Specifications**

Dimensions:	l x w x h	3500 x 1000 x 2400 mm
Weight:	approx.	600 KG
Connections:	electricity -	220 / 380 V and 50Hz, 5 KW
	Pneumatic air –	6 bar , connection G ? "
Speed:		up to 10 m/min for type TDM –S and 20 m/min for TDM –D

Machine is manufactured at Holthausen Maschinenbau exclusively for CLASSEN –TM, CE conform.

- **Samples of woven and knitted fabrics**

