

# VAN DE WEELE



CARPET & RUG TRONIC **CRT**



E

CARPET & RUG TRONIC

# CRTB2



CARPET & RUG TRONIC

**CRT82**



*The Carpet & Rug Tronic **CRT82** is a high speed, versatile double rapier face-to-face carpet weaving machine. Just-in-time, quick deliveries of carpets are of a growing importance. The Carpet & Rug Tronic **CRT82** in combination with the Piletronic PTX, in network, helps the carpet industry to master the market challenges.*

The **CRT82** is controlled by a microprocessor.  
The microprocessor is menu-structured which makes it very user-friendly.  
The microprocessor allows to adjust speed, pick density, lubrication cycles, ... and provides a complete production follow up.



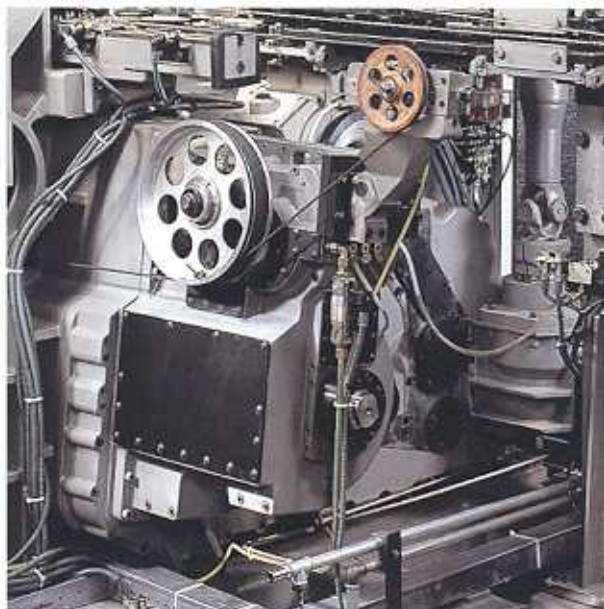
A smooth filling insertion is obtained by patented, controlled brakes and an adjustable rapier guiding system.

The **CRT82** can weave single rapier weave structures by operating alternatively the top and bottom rapiers.

The reliable rapier switch-off system works with a minimum of moving parts.

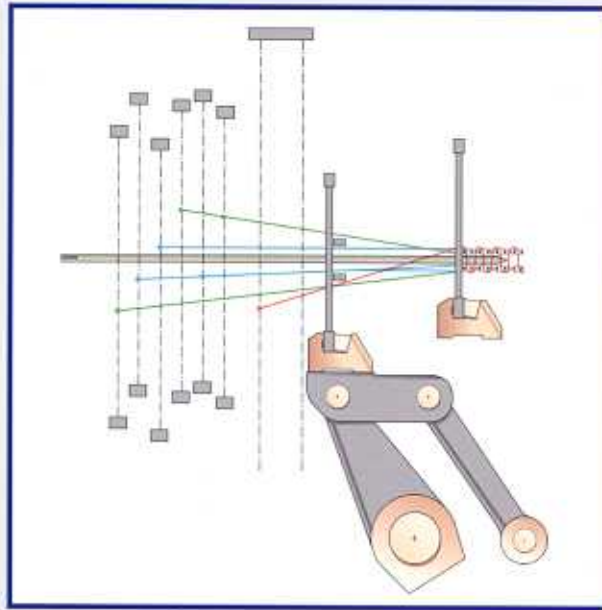
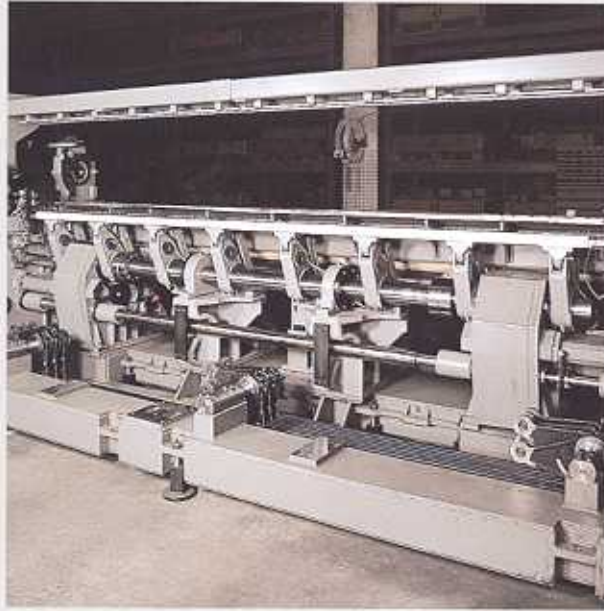
The ultra light knife carriage is driven by a rope which moves in one plane and is thus not subject to torsion.

The rope is driven by three dimensional conjugated cams to guarantee a stable pile cutting over the complete width.



*The parallelogram reed motion is driven by conjugated cams which are mounted in a closed gearbox.*

*The position of these gearboxes improve the stability of the machine.*

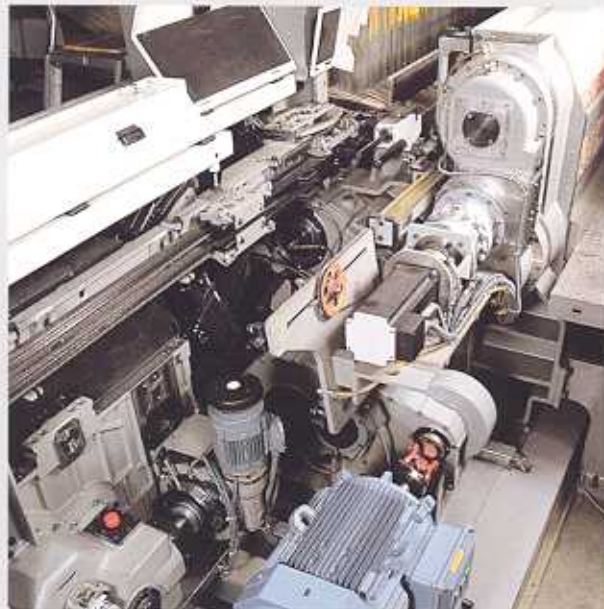


*The parallelogram reed motion minimizes the shed movement and guarantees the quality of the pile surface of both carpets.*

*Gauges (or lancets) guarantee a constant pile height over the complete length of the carpet.*

*The main electric motor, with adjustable speed, drives the machine directly without belt transmission, including the jacquard machines.*

*Automatic pick finding is performed by a separate motor. The electronic pick regulator is controlled by the microprocessor or the Piletronic controller, adjusting the pick density to the required carpet quality and length.*



# CARPET & RUG TRONIC CRT82

*The ergonomic design of the Carpet & Rug Tronic CRT82 improves the accessibility of the yarns for the weaver. Extended signalisation improves the efficiency.*



*When equipped with a high beamstand, eight divided ground beams  $\varnothing$  1250 mm are used. This limits the friction on the pile yarns in high reed densities. Top beams can be exchanged easily with a pulley system.*



*The fillings run optimally from the inclined bobbinstand to prewinders. A motor on the top platform allows to change bobbins easily. The prewinders and the filling brakes are housed in a closed box to be connected to a central dust cleaning system.*





*With a low beamstand 4 divided beams up to 1250 mm diameter are used. The beam let-off is powered by electro motors acting through a special dust proof gear box. Weights assure a constant tension in the ground yarns during the whole weaving process. Stop motions, easily adjustable in position for the ground and pile yarns, increase the weavers efficiency.*

# CARPET & RUG TRONIC CRT82

*The Piletronic PTX has a patented springhook and pulley system working with only one solenoid per harness heddle, giving the three positions for the pile yarn necessary for carpet weaving. The springhook is a very simple and reliable selection system.*

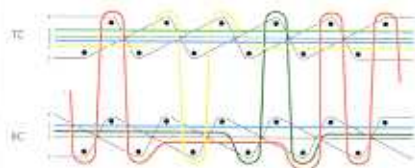


*The multi tasking Piletronic controller programs the Jacquard machines. The controller, in stand-alone or in a network, allows to divide the width of the machine in different paths, working each as a separate machine and weaving different carpet designs up to 14 colours next to each other and one after the other without down time.*

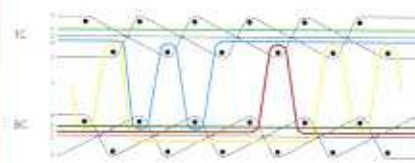




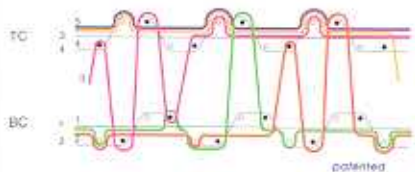
The Carpet & Rug Tronic **CRT82**, equipped with the Piletronic **PTX**, can weave a broad range of different weave structures. The most common are:



1/2 V woven through the back



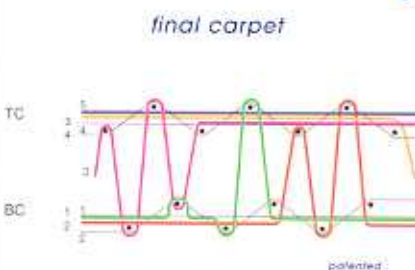
1/2 V not woven through the back



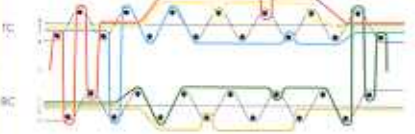
- filling insertion
- no filling insertion



1/1 V  
with incorporated pile floatings

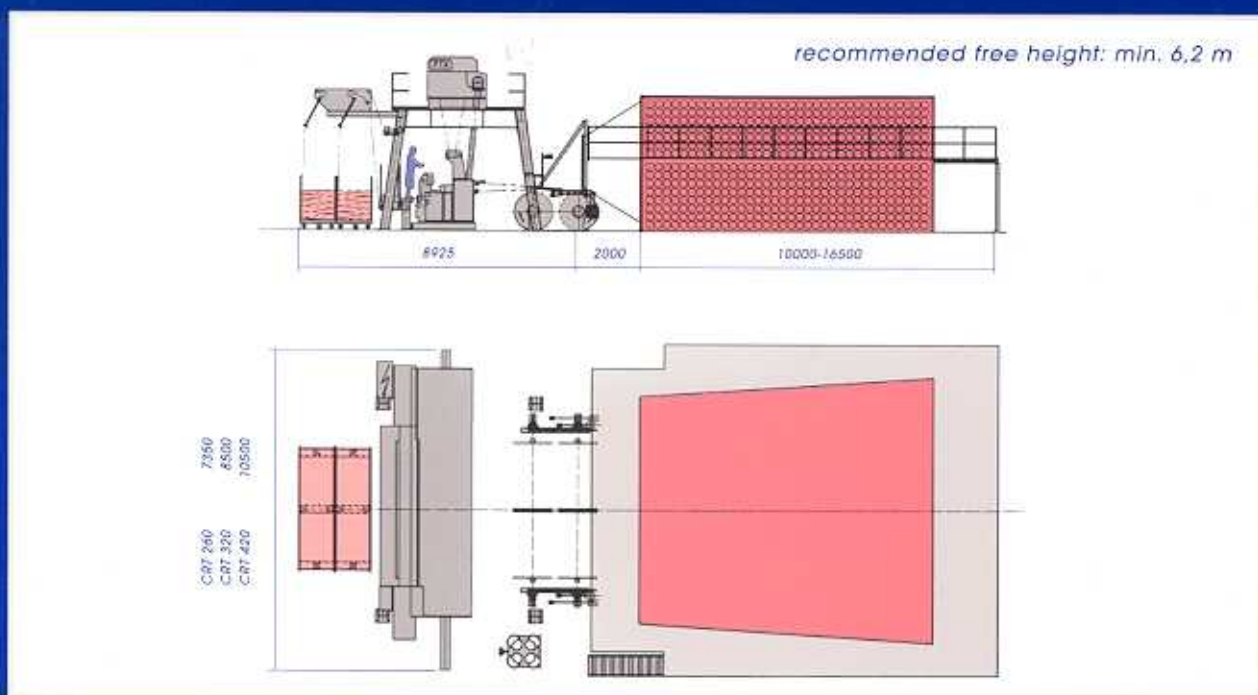


1/1 V  
with dead pile incorporated  
with tight warp



1/1 V  
with visible pile floating effects

More weave structures are possible.  
See our Carpet Weave Structure brochure.



INCREASING DEMAND FOR CARPET WITH MORE COLORS

